



Night work on Elizabeth Drive and Mamre Road in Kemps Creek

M12 Motorway – Central

May 2024



Australian Government



Transport for NSW acknowledges the Dharug people as the Traditional Custodians of the lands on which we work and pays respect to Elders past and present.

The Australian and NSW governments are building the M12 Motorway to provide direct access to the Western Sydney International Airport at Badgerys Creek and connect to Sydney's motorway network.

What work are we doing?

Transport for NSW will pour concrete on the remaining eastbound and westbound decks of the new bridge across Elizabeth Drive in Kemps Creek. We will also install conduits under these bridge decks.

We will pour the eastbound deck at **night** on **Friday 31 May** and the westbound deck at **night** on **Friday 14 June**, weather permitting.

We will install conduits under the bridge deck over **three nights** on **Monday 3 June, Tuesday 4 June** and **Thursday 6 June**, weather permitting.

If these dates change due to weather or program impacts, new dates will be advertised on roadside electronic signs and on the project's website.

This work includes:

- concrete pours within the construction site at the corner of Elizabeth Drive and Mamre Road, Kemps Creek
- installation of conduits under the new deck.

There are several reasons as to why this work is required outside standard construction hours.

- **Safety** – to improve safety by minimising the interactions with motorists, pedestrians and workers
- **Traffic** – to minimise delays and journey times for motorists
- **Weather** – to ensure the concrete cures, rain and temperatures are critical to ensure the concrete cures correctly
- **Quality** – to ensure quality, the concrete and asphalt can be impacted if activities are not continuous.

Our work schedules

Our night work hours are between **6pm** and **6am**.

What equipment will be used?

During the work we will use, concrete vibrators, concrete trucks, a concrete pump, hand power tools, concreting tools, lighting towers, elevated work platforms, mobile cranes, cleaning equipment, light and heavy vehicles and generators.

How will this work affect you?

During our work you may see increased activities in the area. The work may be noisy at times, but we will do everything we can to minimise its impact, including turning off equipment and machinery when not in use.



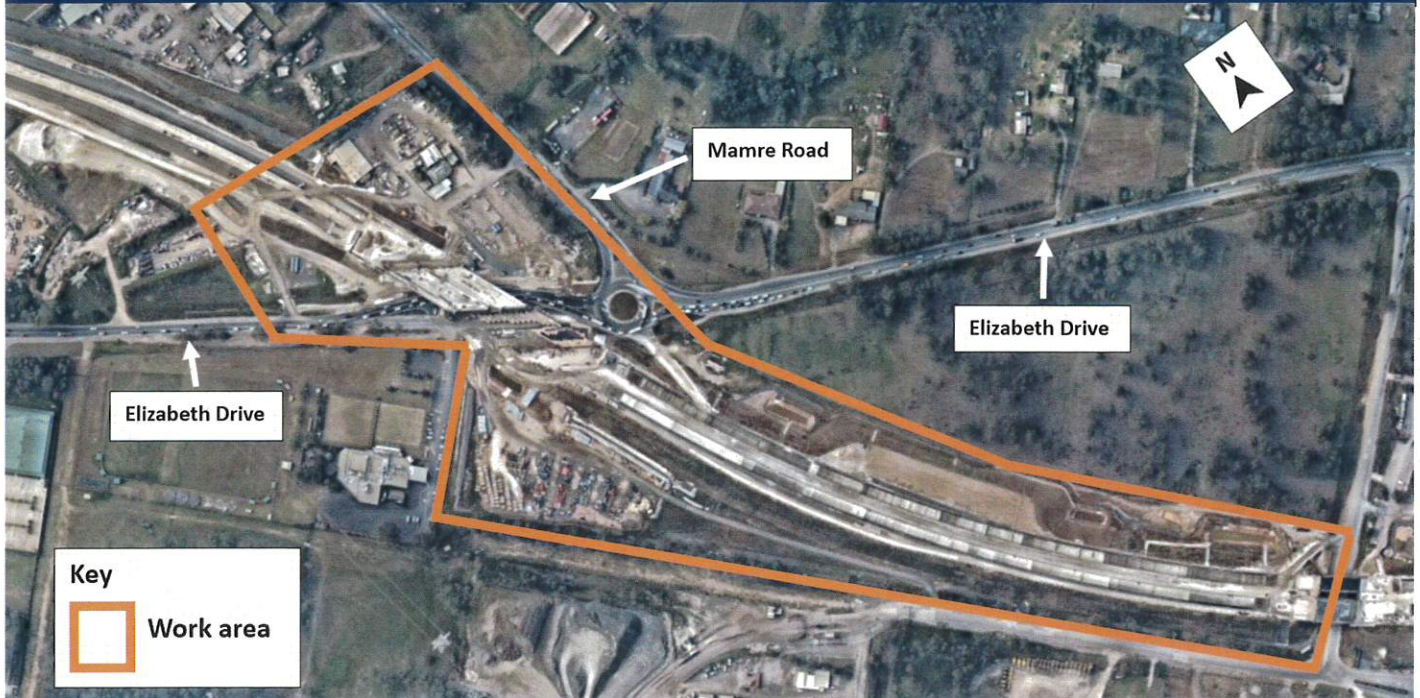
Traffic changes

There will be temporary traffic changes along Elizabeth Drive and Mamre Road to ensure the work zone is safe.

Lane closures, contraflow, stop/slow traffic conditions and a 40km/h speed limit will be in place.

Please keep to speed limits and follow the direction of traffic controllers and signs.

Work zone – Elizabeth Drive and Mamre Road



Contact us



Project Infoline and 24-hour Construction Response Line **1800 517 155**



M12central@seymourwhyte.com.au



nswroads.work/m12



PO Box 973
Parramatta, NSW 2124



Visit the online portal go to
nswroads.work/m12



For the latest traffic updates:
Call 132 701, visit livetraffic.com or
download
the app Live Traffic NSW



Interpreter service

For languages other than English call 131 450
Arabic • Greek • Hindi • Mandarin • Vietnamese

لطلب خدمة الترجمة الشفهية للغات غير الإنجليزية اتصل
بالرقم **131 450**

Για υπηρεσίες διερμηνείας σε άλλες γλώσσες εκτός από
τα Αγγλικά καλέστε το **131 450**

अंग्रेज़ी के अतिरिक्त अन्य भाषाओं के लिए दुभाषिया सेवा
131 450 पर कॉल करें

获取英语以外的其他语言口译协助服务可以致电**131 450**

Để có dịch vụ thông ngôn cho các ngôn ngữ khác tiếng
Anh, gọi số **131 450**

www.transport.nsw.gov.au/privacy-statement#Your_Privacy